

Orillia Public Library

...

BY: Stephany Marin

Name: Orillia Public Library

Location: Orillia, Ontario, Canada

Date Completed: 2012

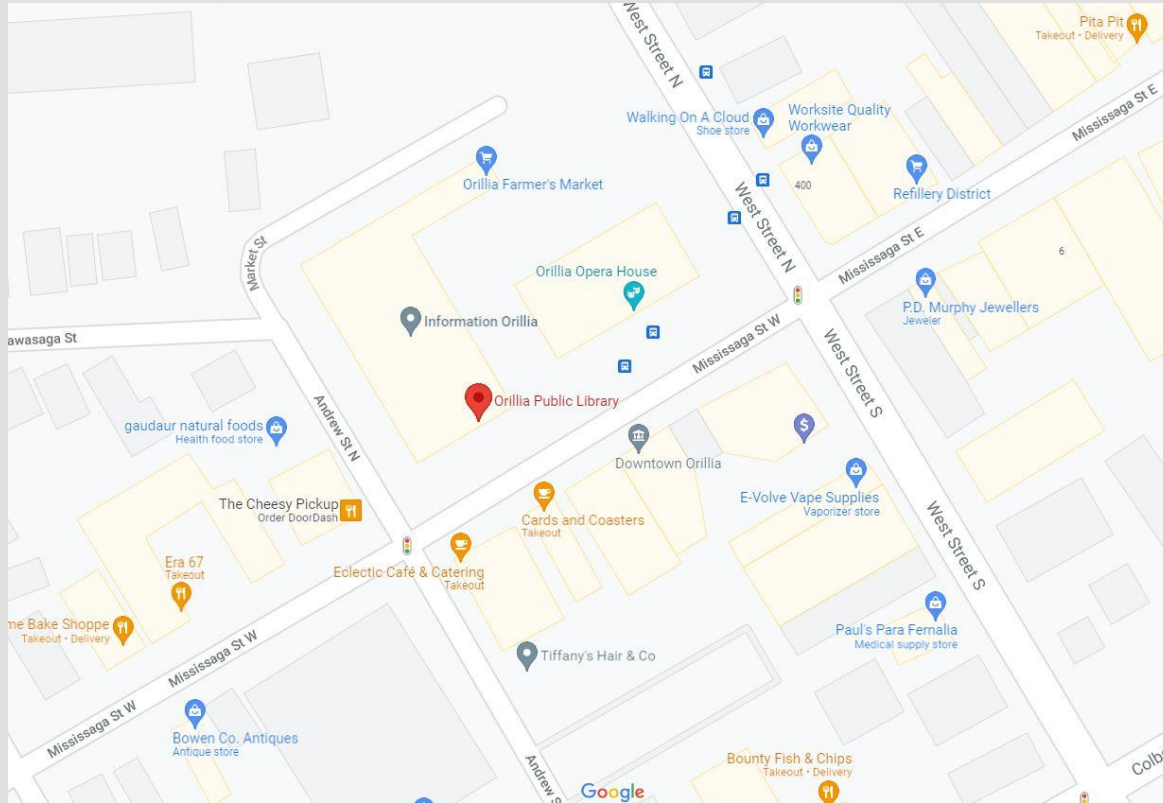
Total Building SF: 42,000 sq ft

Total Project Cost: \$18,800,000 CAD

Architect: Perkins + Will Canada Inc.

Site Analysis

Site Map



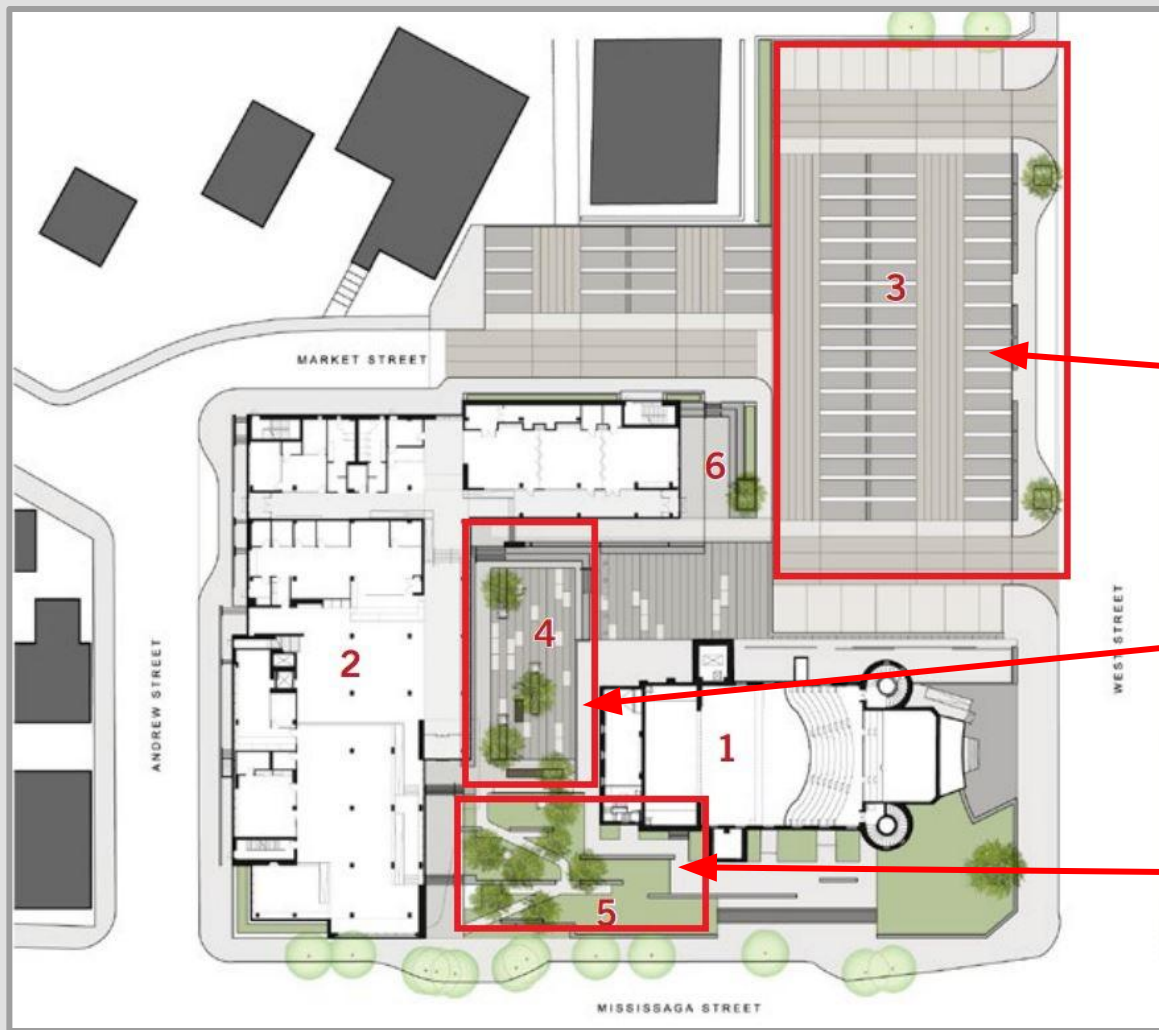
- Center of Downtown Orillia
- Urban/suburban area
- Located on street with many businesses
- Visible to Street

Site development



The Orillia Library(2), Farmer's Market(3), and existing opera house(1) were plotted to create a designated downtown center. The space created in between the library and the opera house becomes a public courtyard that can be used for community/festival events, outdoor performances, and a gathering area for after concerts.

Public Features



Farmers Market

Public Courtyard

Reading Gardens

Farmers Market



Library has 84 parking stalls (3 handicap) that double as the communities farmers market.

Public Courtyard



Reading Gardens



Town Staple



- One of the biggest building in town
- Aesthetically pleasing building both in the day and night
- Site is open to public
- Location for community services such as: adult learning, children services, community meeting area and computer training.
- 16.) The design of the building anticipates adaptability for future uses by having the space to add technology for ebooks and electronic help desks.

Building Exterior

Main Entrance

Its primary entrance is on Mississauga Ave. It is defined by the architectural concrete walls and an elongate path to the front door.

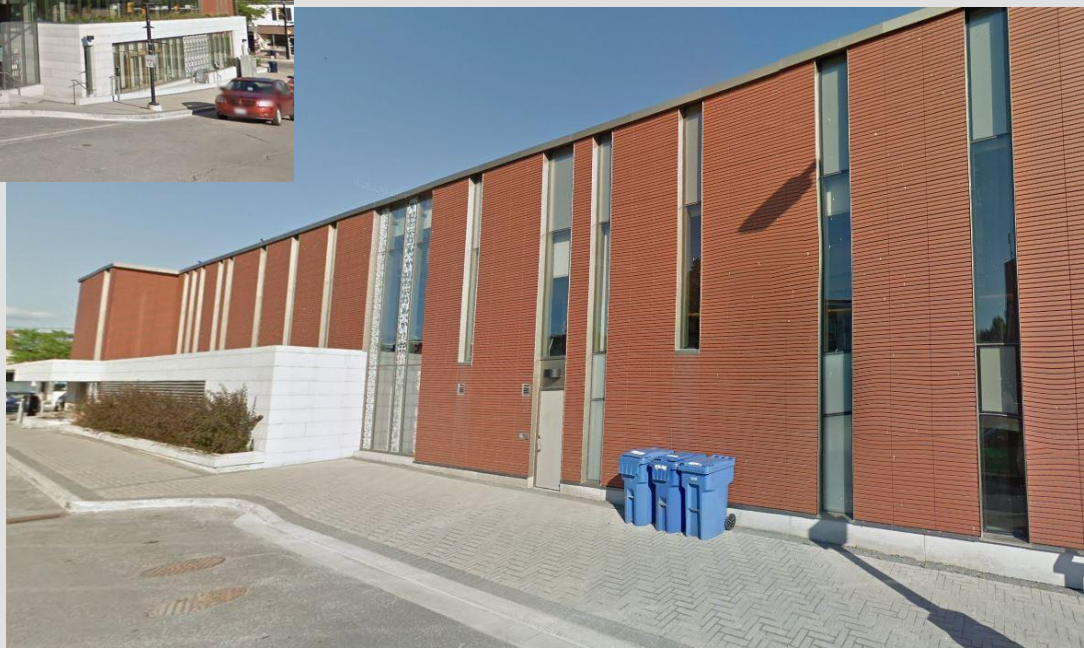
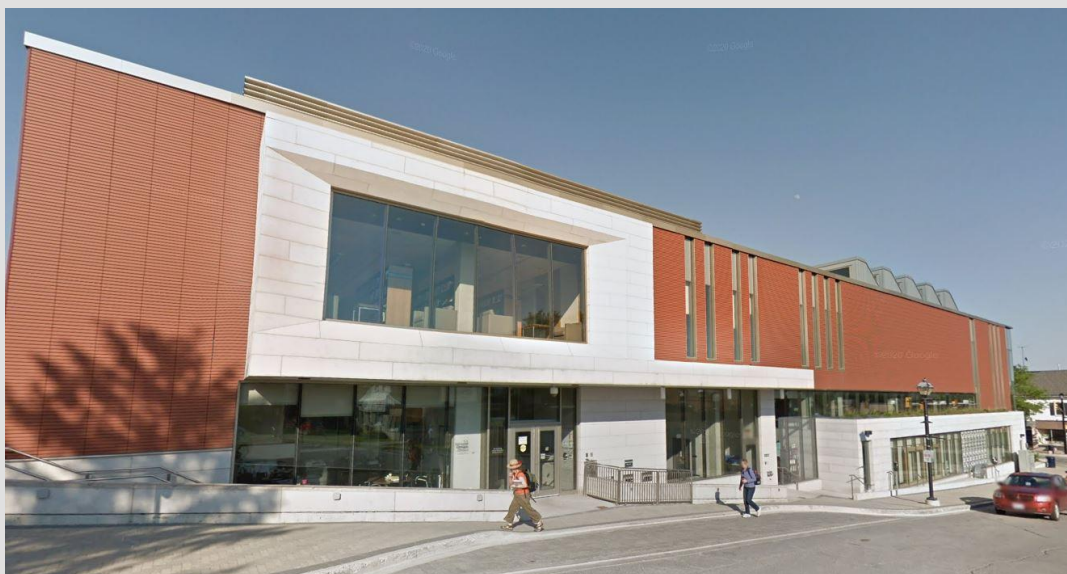


Main Entrance



The library's ribbon of ornate glass is complemented by simple expanses of Spanish terracotta tile, architectural concrete and Ontario limestone that echo the materiality of the Opera House and the surrounding streetscape







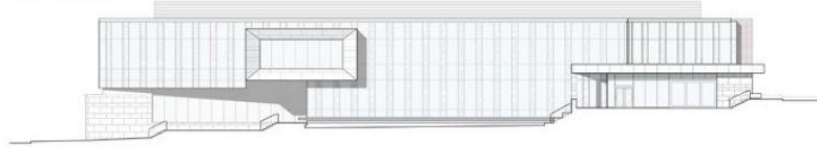
The library is distinguished by its fritted glass windows that provide a contemporary interpretation of mass produced ornament.

The patterns are derived from motifs found in the library's rare book collection and create a dialogue with the town's historic buildings

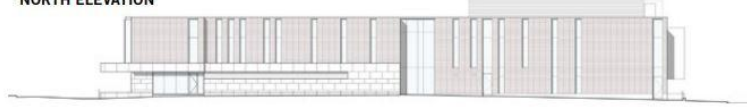


Elevations

EAST ELEVATION



NORTH ELEVATION



SOUTH ELEVATION



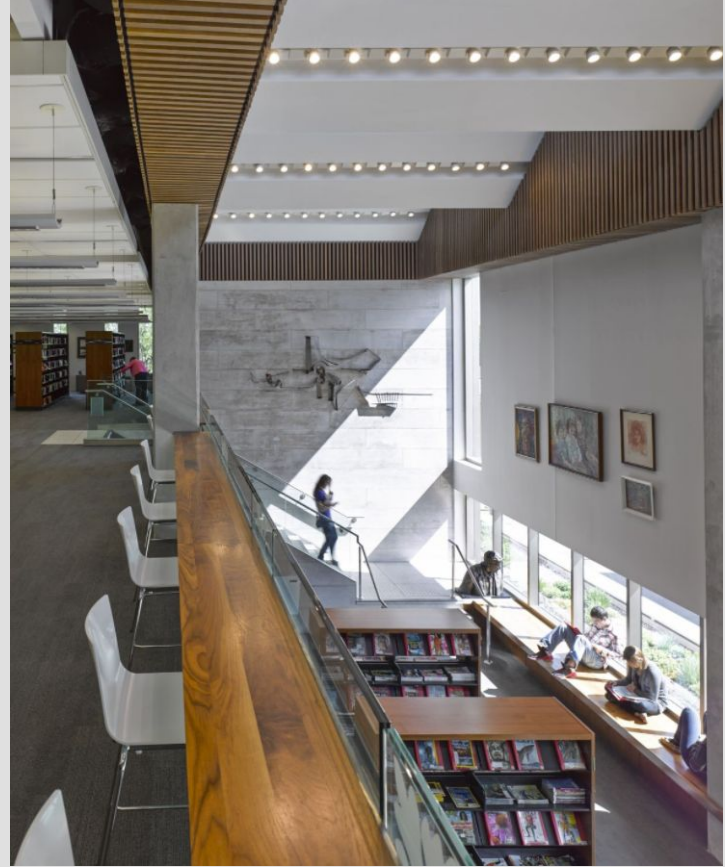
WEST ELEVATION



Building Interior

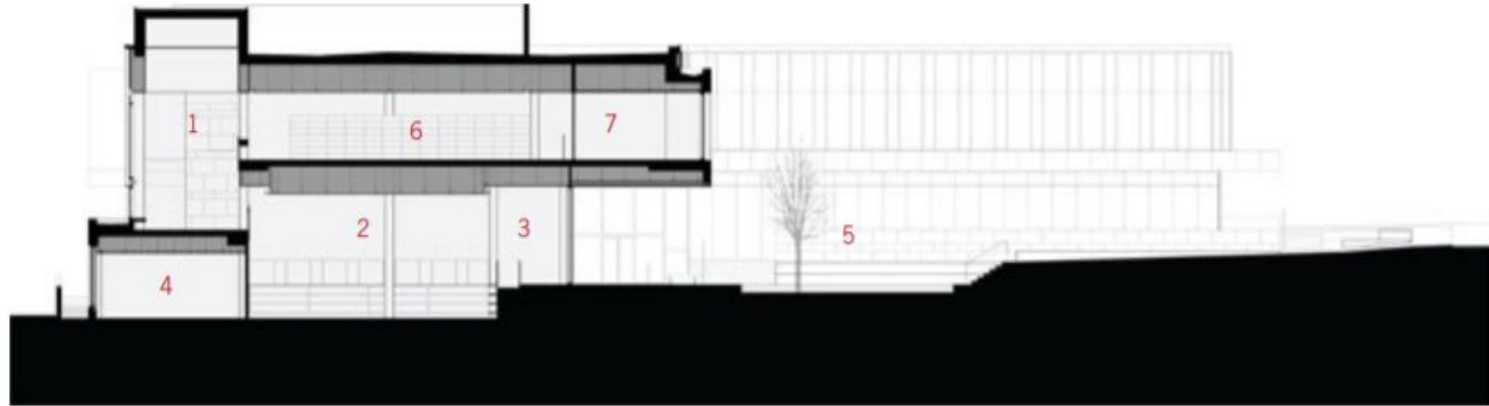
The library interior is a combination of the architectural concrete and wood paneling finishes. The colors are neutral which helps maintain a contemporary aesthetic.





Sections

SECTION A



- | | | |
|--------------------------------------|----------------------------|-----------------------------|
| 1. Gallery Hall | 4. Children's Program Area | 7. Computer Learning Center |
| 2. Children's Collection | 5. Library Square | |
| 3. Ramp & Stairs to Children's Level | 6. Adult Collection | |

The Gallery Hall and Children's Collection would both be considered a story and a half spaces

Sections

SECTION B



- | | | | |
|-----------------------------|----------------------------|------------------------|----------------------|
| 1. Gallery Hall | 4. Children's Program Area | 7. Circulation | 10. Adult Collection |
| 2. Children's Activity Area | 5. Children's Staff | 8. Information Orillia | |
| 3. Fireplace Lounge | 6. Lounge | 9. Staff Workrooms | |

The Children's Activity Area and Gallery Hall have higher ceilings than the other spaces

Sections

SECTION C



- | | |
|-------------------------------------|------------------------------|
| 1. Steps up from Mississauga Street | 4. Youth Collection & Lounge |
| 2. Entrance Hall | 5. Computer Learning Center |
| 3. Reception/Check-out | 6. Cafe |

The Entrance Hall is considered a two-story space and the Cafe is considered a story and a half

Floor Plans and Analysis

Ground Floor



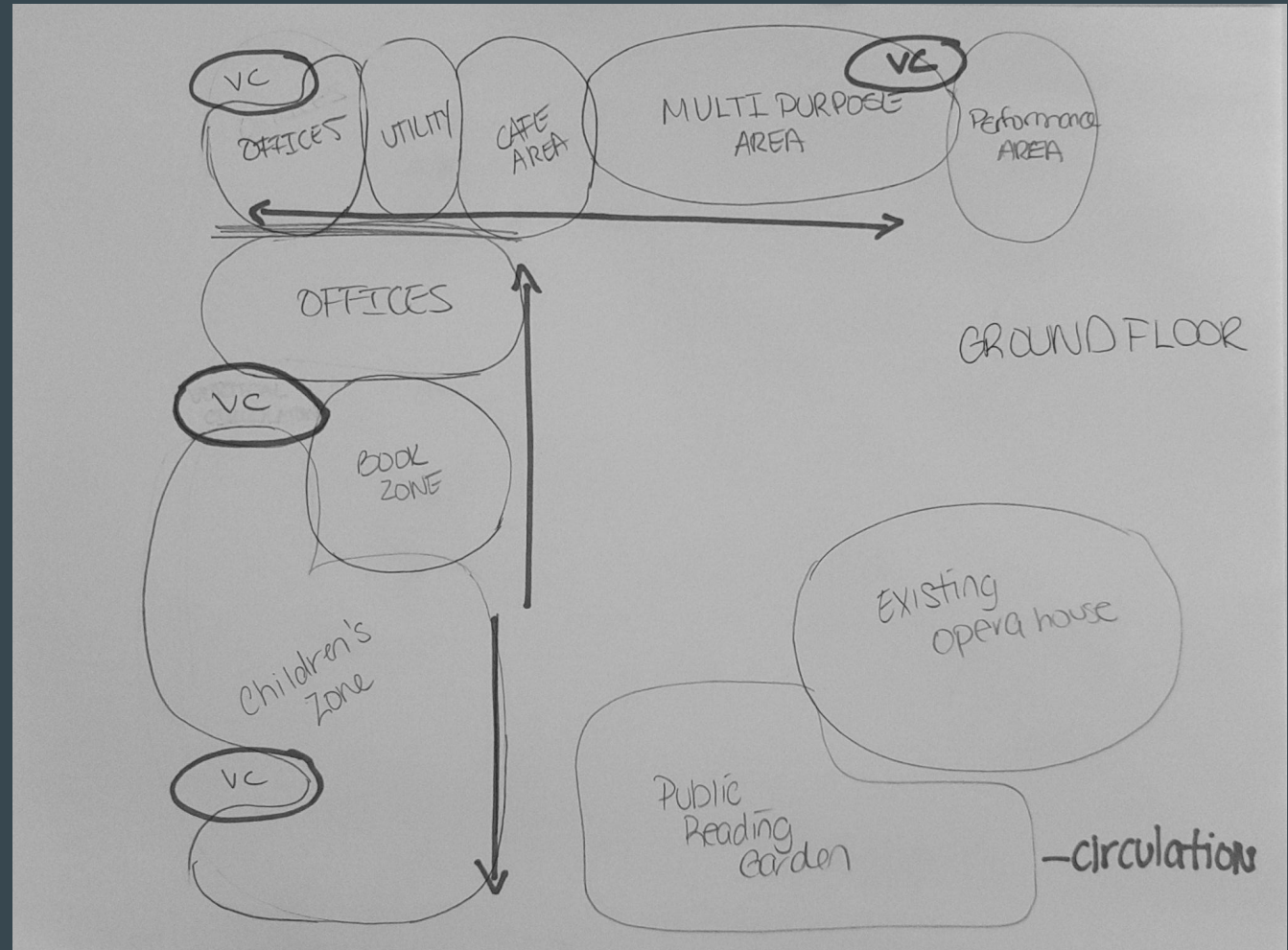
Second Floor



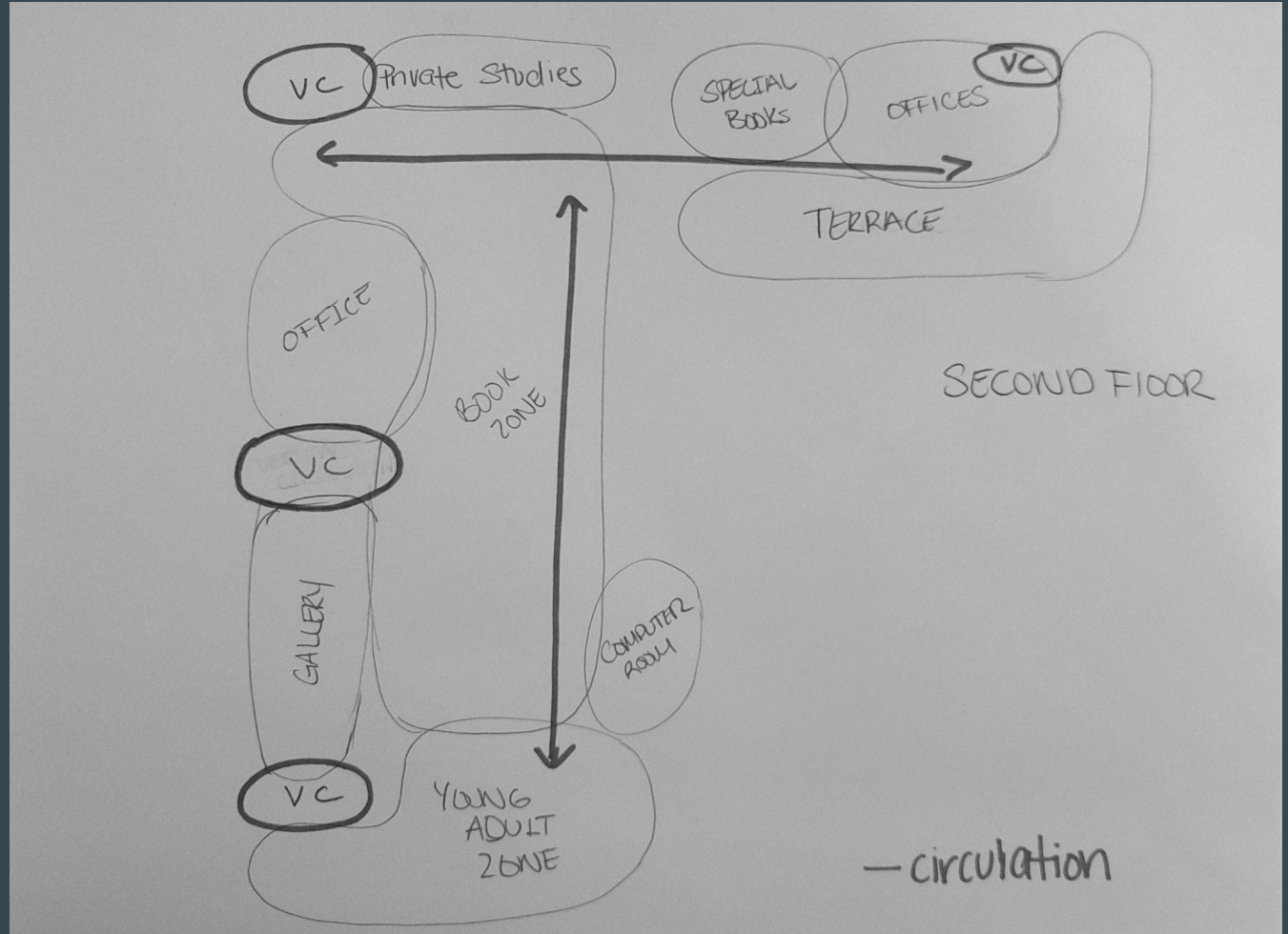
Zones and Areas

- Stakes area
- Childrens Zone
- Young Adult Zone
- Private Studies
- Administrative/Staff Zones
- Gallery
- Utilities
- Cafe
- Multipurpose Areas
- Performance Areas
- Technology Areas

There are a few spaces within the library that have multiple uses; these rooms are the circulation room, where they rotate all the books and help check out and answer questions, and the multipurpose rooms. No rooms are undefined, all spaces have their own label and function for organization.



The library has different users that come in and use the materials. The users are children, teens and adults.



Children and Young Adult Area

- The characteristics of the children's area is that it is secluded in its own area with a play area and book isle for all kids books.

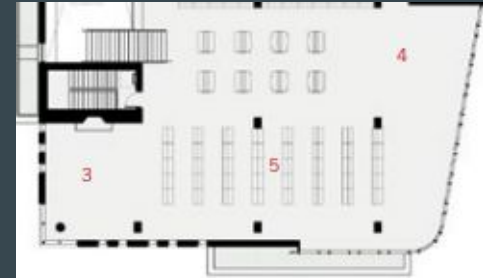
8 - Children's Reference & Lounge
9 - Children's Collection
10 - Children's Activity Area
11 - Children's Program Area
12 - Children's Staff

- The characteristic for the teens area is that its split from young and adult books, has study hall rooms, and lounge and cafe areas.

3 - Fireplace Lounge
4 - Youth Lounge
5 - Youth Collection

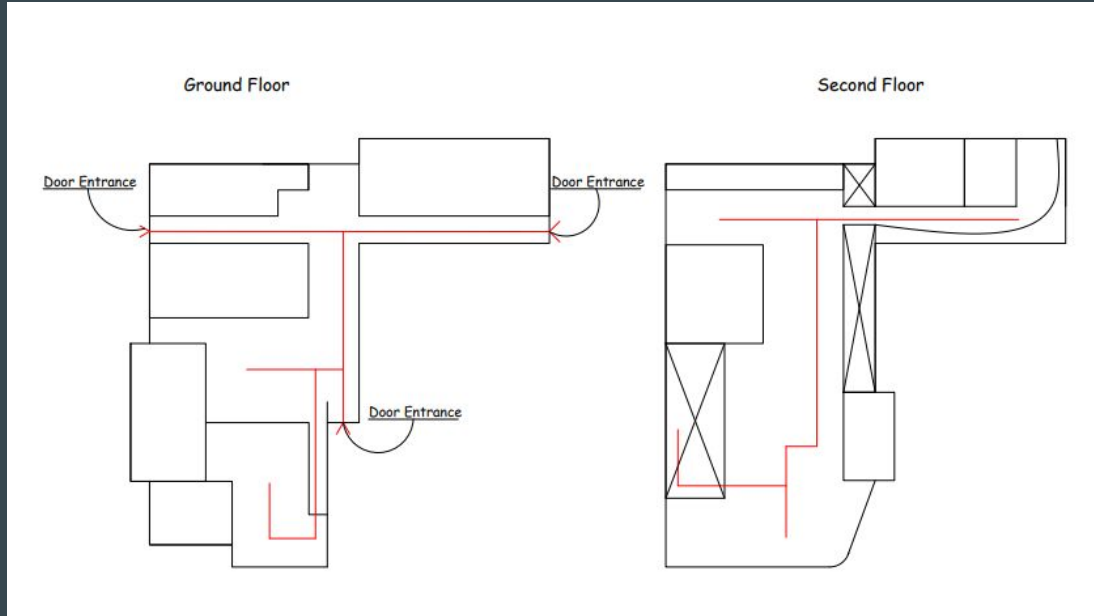


Children's Area



Young Adult Area

Entry & Circulation to Use-Space

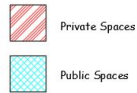


- T-shaped circulation
- Long defines spaces both in the X & Y axis
- Bridge on 2nd Floor

Circulation Visuals

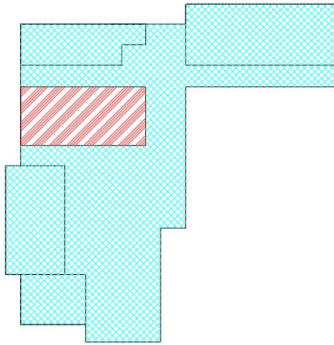


Private and Public Space

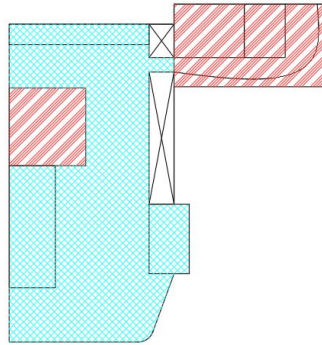


Public and Private spaces

Ground Floor

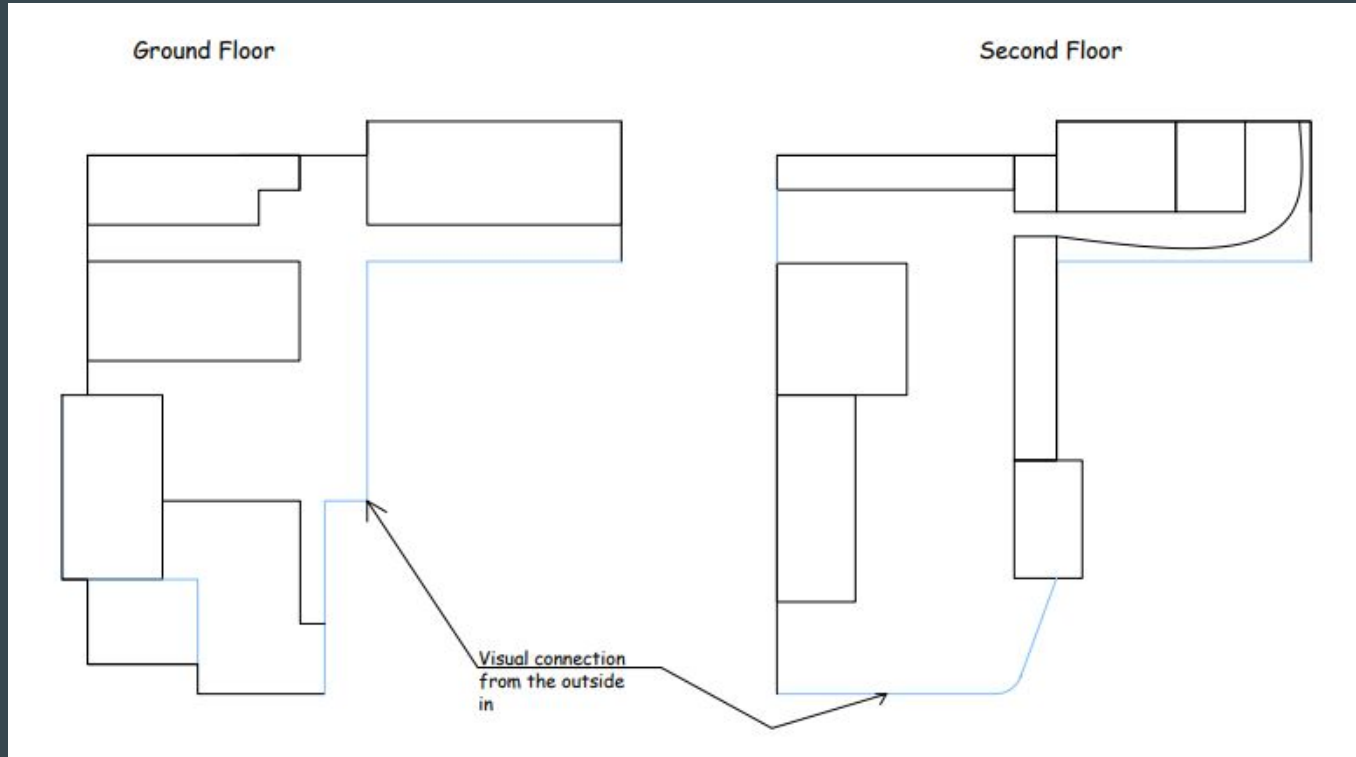


Second Floor



- Private spaces in this library would be areas that are designated for staff members
- Staff areas are placed into specific zones separated by walls
- Zones includes administrative offices, work areas, and staff lounges.

Important Visual Connections



Interior to Exterior Visuals

Glass Panels allow for view of exterior from inside library. This creates an almost seamless connection between the library and exterior spaces.



Views to Courtyard



Views to Roof Garden

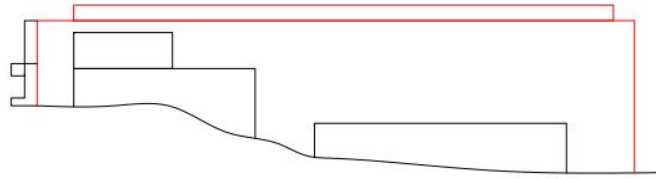


Views to Reading gardens

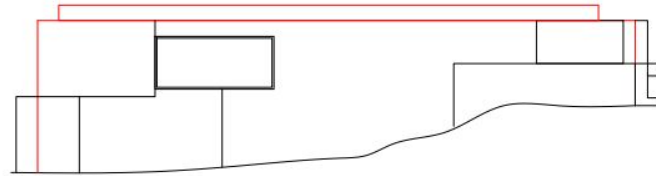
Massing

Massing

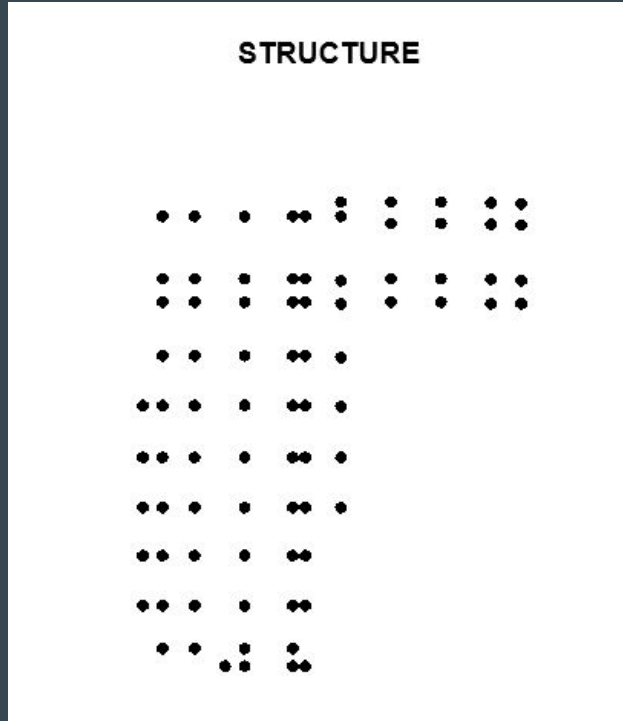
West Elevation



East Elevation

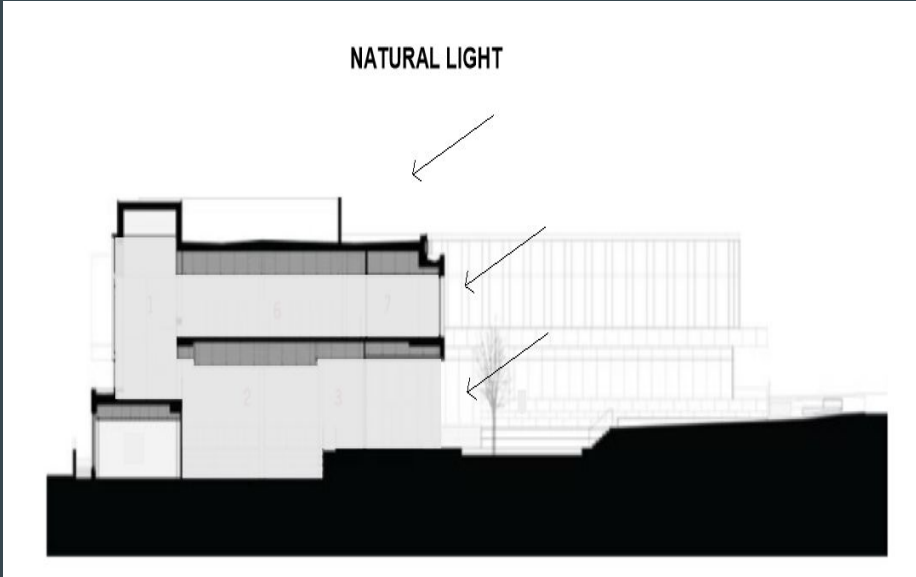


Structure



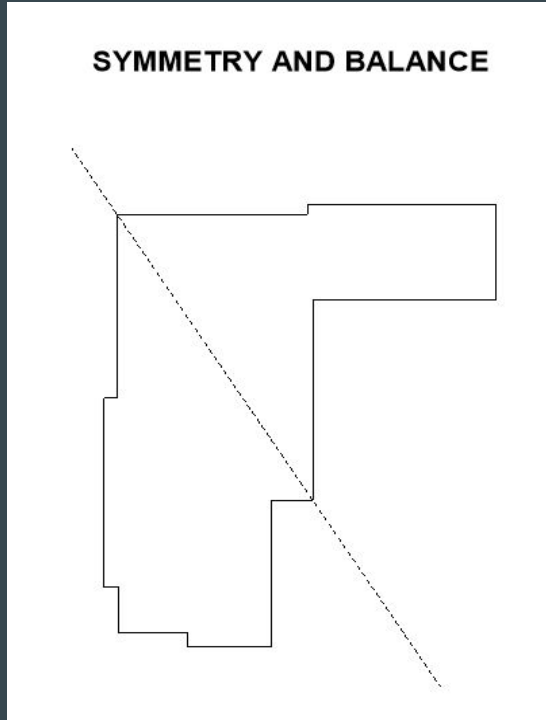
- The structure of the library forms an L-shaped figure.
- The library's structure is made up of primary columns
- Structural concrete columns are sorted in a grid system.
- Steel and light-steel construction also used.

Natural Light



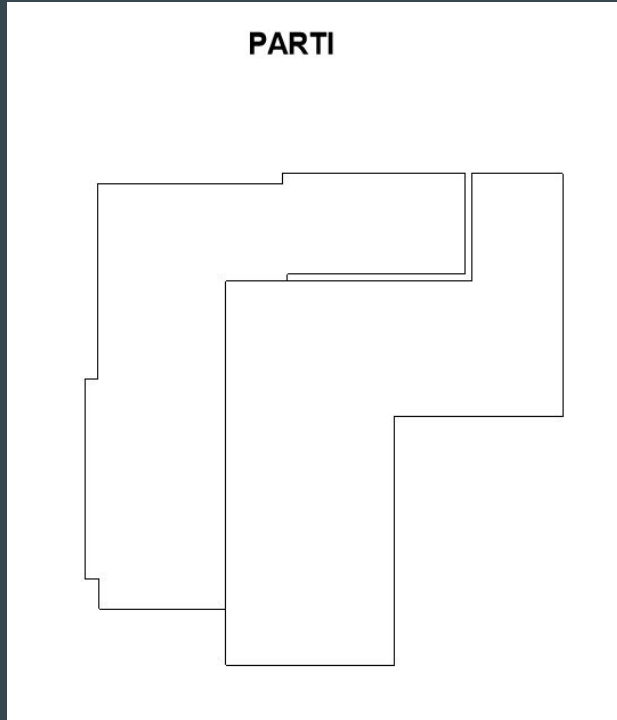
- Natural light comes from the east side of the lot.
- Library areas that would receive direct hits of sunlight are
 - Entrance Hall
 - Ramp & Stairs to children's levels.
 - Computer Learning Center
- Public courtyard would also receive direct hits of natural light.

Symmetry and Balance



- Since the library is in an L-shaped figure, it would be difficult to give it Symmetry and Balance by splitting it horizontally or vertically.
- However, splitting it diagonally makes the building symmetrical and gives it an even balance.

Parti



- In the parti, we can visualize the thought or idea behind the architect's design.
- Parti allows the architect to layout attributes around the library.

ADA Requirements

- This library is open to public
- The building complies with ADA features such as
 - exterior/interior ramps into the building
 - ADA bathroom stalls,
 - wide hallways
 - Elevator to access 2nd floor



Spaces by Size and Location

NAME	APPROX. SF	FLOOR LEVEL	GENERAL FURNITURES/ FIXTURES	FIXED OR FLEXIBLE
ENTRANCE HALL	1,156	1	Tables and Chairs	FLEXIBLE
RECEPTION/ CHECK-OUT	225	1	Desk and Computers	FIXED
POPULAR MATERIALS	1,400	1	Bookshelves and Help Desk	FIXED
CHILDREN'S REFERENCE LOUNGE	696	1	Computer Desk, Sitting Area, Reference Desk and Bookshelves	FIXED
CHILDREN'S COLLECTION	1,380	1	Bookshelves, Tables, and Chairs	FIXED

NAME	APPROX. SF	FLOOR LEVEL	GENERAL FURNITURE/ FIXTURE	FIXED OR FLEXIBLE
CHILDREN'S ACTIVITY AREA	450	1	Activity Tables and Chairs	FLEXIBLE
CHILDREN'S PROGRAM AREA	400	1	Activity Tables and Chairs	FLEXIBLE
CHILDREN'S STAFF	363	1	Computer Desks and Chairs	FIXED
LOUNGE	136	1	Lounge Chairs and Table	FLEXIBLE
CIRCULATION	1,334	1	Office Spaces, Equipment to order and process new Materials	FIXED
CAFE	744	1	Coffee Station, Tables and Chairs	FIXED

	NAME	APPROX. SF	FLOOR LEVEL	GENERAL FURNITURE/ FIXTURE	FIXED OR FLEXIBLE
	MULTIPURPOSE ROOMS/ MARKET HALL	2,044	1	Conference Table and Chairs	FIXED
	PUBLIC WASHROOMS	500	1	Bathroom Stalls, Sinks, Mirrors	FIXED
	INFORMATION ORILLIA	676	1	Office Desks and Chairs	FLEXIBLE
	GALLERY HALL	1,173	1 1/2	Bookshelves, Sitting Ledge, Chairs, and Tables	FIXED
	REFERENCE AREA	2,562	2	Reference Desk, Bookshelves, Sitting Ledge, and Study Tables	FIXED

NAME	APPROX. SF	FLOOR LEVEL	GENERAL FURNITURE/ FIXTURE	FIXED OR FLEXIBLE
FIREPLACE LOUNGE	323	2	Lounge Chairs, Tables and Fireplace	FLEXIBLE
YOUTH LOUNGE	765	2	Sitting Area and Tables	FLEXIBLE
YOUTH COLLECTION	704	2	Bookshelves	FIXED
ADULT COLLECTION	2,551	2	Bookshelves	FIXED
COMPUTER LEARNING CENTER	522	2	Computer Desks and Computers	FIXED

NAME	APPROX. SF	FLOOR LEVEL	GENERAL FURNITURE/ FIXTURE	FIXED OR FLEXIBLE
STAFF WORKROOMS	925	2	Office Desks and Chairs	FLEXIBLE
STUDY ROOMS	320	2	Tables, Chairs, and White Boards	FLEXIBLE
HISTORICAL COLLECTION	570	2	Bookshelves, Table and Chairs	FIXED
STAFF LOUNGE	336	2	Sitting Area and Large Table with Chairs	FLEXIBLE
ADMINISTRATION OFFICES	752	2	Office Desks and Chairs	FLEXIBLE